

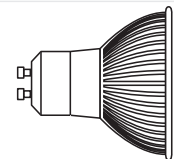
Fitting/replacing bulbs (Max. 7W LED GU10)

When changing a bulb, always switch off at the mains and allow the bulb to cool before handling. Dispose of used bulbs carefully.

Do not exceed the wattage stated or use a different shape bulb from that indicated on the fitting.

To access the bulb, unscrew the lampholder covers. Turn the bulb one quarter turn anticlockwise and remove. Push the new bulb gently into the lampholder and twist a quarter turn clockwise to engage pins. Finally, refit the lampholder cover. Screw on tightly to maintain IP protection.

7W LED GU10



Photocell Sensor

- This product is fitted with a photocell. The specification is as follow:

Rated load: Max. 100W~220-240VA

Operating Level: $\leq 10 \pm 5$ Lux On, $\geq 30 \pm 10$ Lux Off

Operating Temperature: $-25^{\circ}\text{C} - +45^{\circ}\text{C}$

- It is normal for the sensor to take several minutes to turn off when the product is first installed. To test "turn on" during daylight hours - cover the sensor with opaque material. The test will take approximately 2 minutes.

Technical data

Supply Voltage: 220-240 V~, 50 Hz Bulb Type: 2 x Max. 7W LED GU10 (required)



Conformity with all relevant UKCA Directive requirements.



The power supply is Double Insulated and does not require connection to an Earth circuit.



Waste electrical products should not be disposed of with household waste. Please recycle where facilities exist. Check with your Local Authority or local store for recycling advice.



This product is suitable for dimming.



This product is rated at IP44.

Care and Safety

We recommend cleaning with a soft dry cloth. Do not use solvents or abrasive cleaners as these could damage the finish.

For your safety, always switch off the power supply before changing lightbulbs, or cleaning.



This LED's are protected by a PC shade. The shade part must be replaced immediately should it become cracked or damaged. This fitting must not be used without the PC shade in place.

Instruction manual

Icarus Photocell 2LT Wall

81015



V1 23/02/2023

UK Manufacturer: BH17 7BY

EU Manufacturer: Brilliant AG,
Brillantstrasse 1, D-27442 Gnarrenburg

saxby
lighting

www.saxbylighting.com

saxby
lighting

Thank you for purchasing this light fitting. Please read the instructions carefully before use to ensure safe and satisfactory operation of this product. Please retain these instructions for future reference.

Warning

 This light fitting is double insulated and does not require connection to an Earth circuit.

Please read these instructions carefully before commencing any work.

This unit must be fitted by a competent and qualified electrician.

Install in accordance with the IEE Wiring regulations and current Building Regulations.

Check the pack and make sure you have all the parts listed.

To prevent electrocution switch off at the mains supply before installing or maintaining this fitting. Ensure other persons cannot restore the electrical supply without your knowledge.

If you are in any doubt, please consult a qualified electrician.

If replacing an existing fitting, make a careful note of the connections.

This light should be connected to a circuit with a 30mA RCD fitted.

This product is not suitable for location in or near a marine environment.

The entire unit gets hot whilst on for a period of time, ensure the fitting is mounted out of arms reach.

Never put anything on the product or hang anything on any part of this product.

Waste electrical products should not be disposed of with household waste. Please recycle where facilities exist. Check with your local authority or retailer for recycling advice.

Layout

Plan the desired layout of these fittings carefully, ensuring the cables will reach the distances between the junction box and the each light fitting.

Avoid locating any cables in positions that would cause a hazard. Position cables and outdoor rated junction boxes (not supplied) away from areas where they may be at risk from being cut, trapped or damaged.

We recommend that you use H05RN-F specification cable (not supplied) which is an outdoor grade, rubber sheathed cable.

The mains supply cable must have a minimum cross section area of 1.0mm².

Cables must be protected using suitable conduit or plastic trunking.

Take care not to drill into any pipes or mains cables beneath the surface during mounting holes preparation.

Installation

Existing fittings must be completely removed before installation of a new product. Before removing the existing fitting, carefully note the position of each set of wires.

Note that the switch is turned off before installation.

Ensure that the screws and cable entry points are sealed to maintain the IP rating of the product.

After deciding the layout of the light fittings ensure that the cables are long enough to connect to desired positions.

Follow the installation steps below to install.

- Determine the position of your light fitting taking into account the entry position of the cable and the **ARROW** indicating which **WAY UP** the base is to be fitted. Make sure there is sufficient cable coming out of the wall to connect to the terminal block. Ensure that the mounting surface is solid, preferably a brick or block wall and ensure that there are no other cables or pipes beneath the surface.

- Separate the plastic back plate from the fitting by removing the two screws on the both side of the fitting. Use the back plate as a template and mark the 4 fixings holes, making sure the back plate is correctly aligned and horizontal. Use appropriate fixings to secure the back plate to the wall. **Ensuring the Drain Hole is at the base of the mounting box.**

- Use a sharp object such as a screwdriver to pierce the rubber grommet in the back plate. Thread the cable through the hole and fix the mounting box to the wall using the screws and plugs supplied. Take care not to damage any concealed wiring.

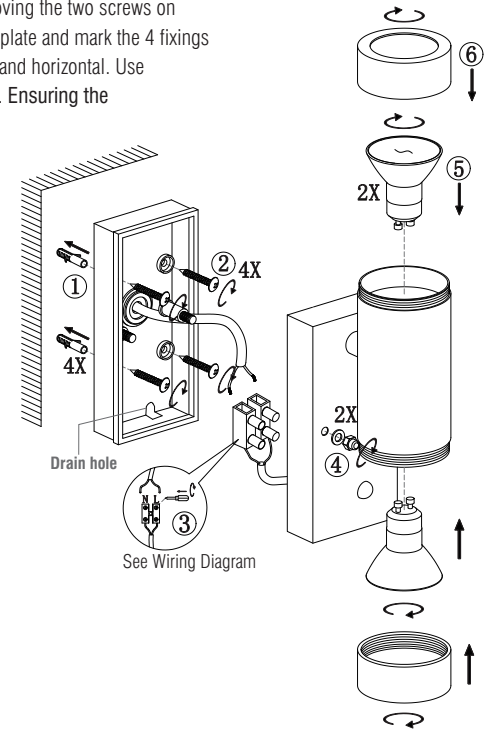
- Wire as detailed Wiring diagram.

- Refixing the light fitting over the back plate by using the screws.

- Fit the appropriate bulbs into the lamp holders
NOTE: Never fit bulbs of a higher wattage than specified on the label (as this may cause overheating and damage the fitting).

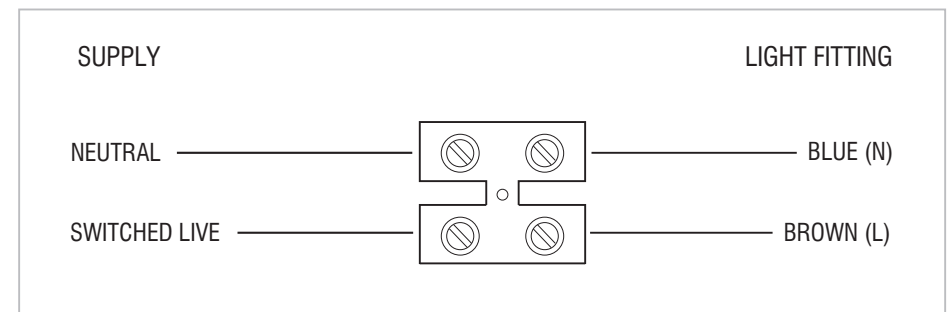
- Place the bulb covers.

- Replace fuse or circuit breaker and switch on. Your light is now ready for use.



Wiring

Having correctly identified the wiring from your existing light fitting, pull the mains wire through the hole and connect to the quick fit connection block in the following way.



Check that...

You have correctly identified the wires

The connections are tight

No loose strands have been left out of the connection block.

Reseal the approved outdoor rated external terminal block